

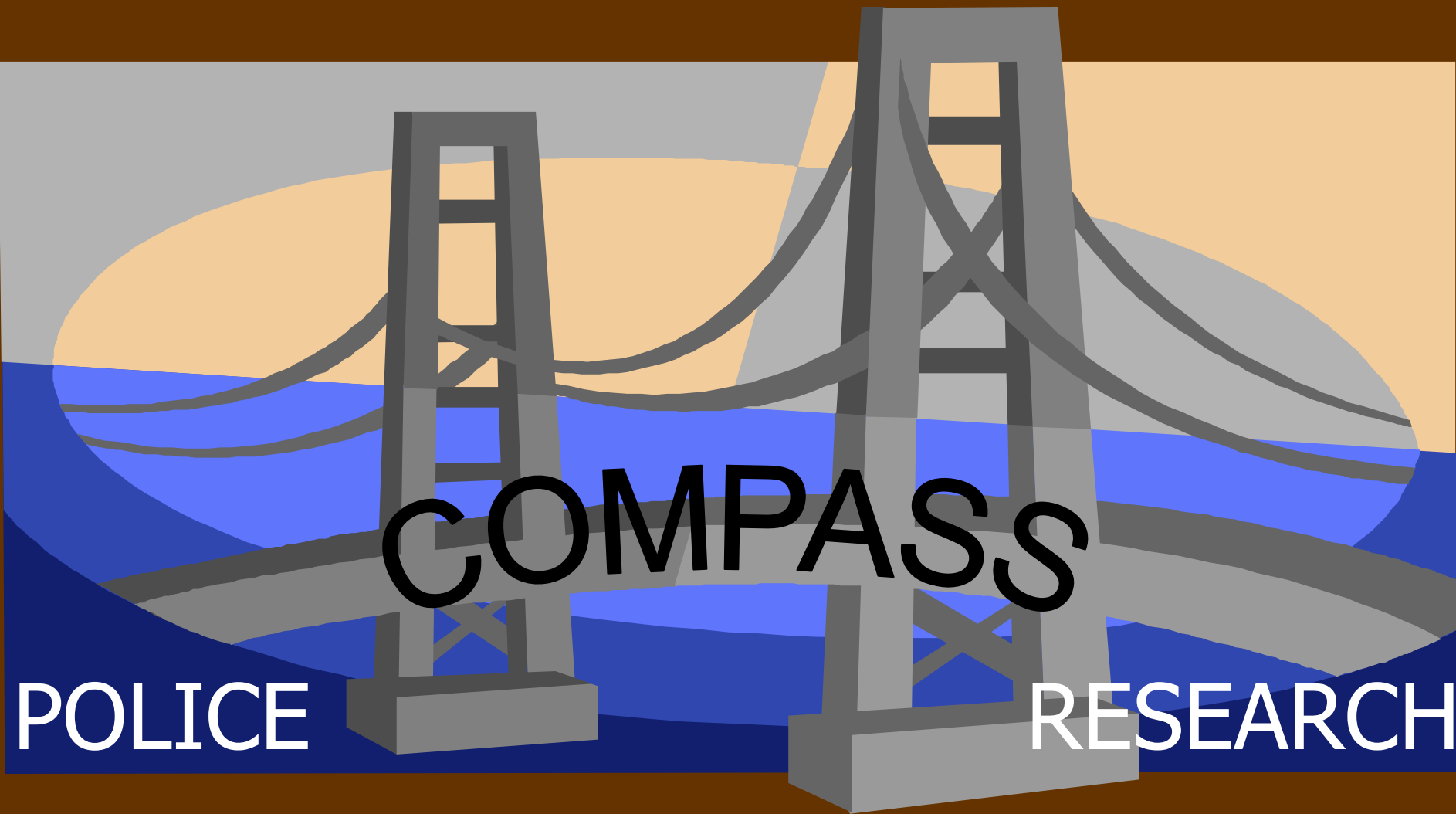
# Research Realities in Real World Policing



ACJR(CA) Conference

October, 2003

Presented by Julie Wartell



# COMPASS

POLICE

RESEARCH

# What is COMPASS?

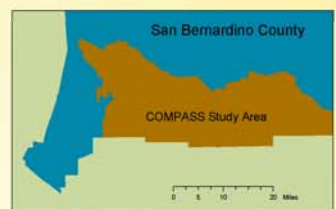
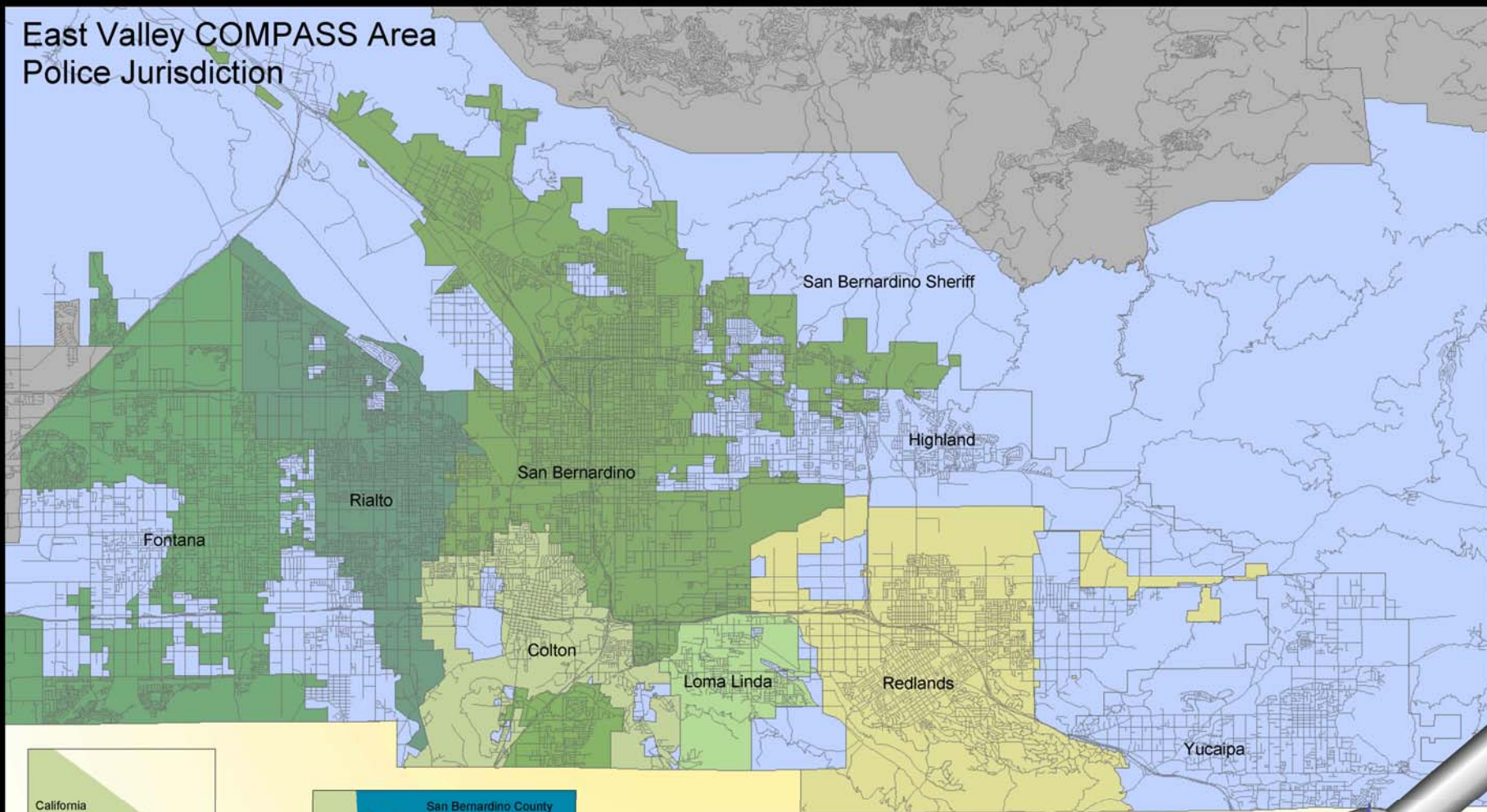


- Analytic tool for identifying and understanding problems
- Data-driven strategies
- Collaborative planning

## Current COMPASS Sites

- Seattle, WA
- Milwaukee, WI
- East Valley

# East Valley COMPASS Area Police Jurisdiction



East Valley  
COMPASS

# A Collaborative Effort

- Interagency
- Interdisciplinary
- Multi-jurisdictional
- Independent research partner



# Forming the collaborative group

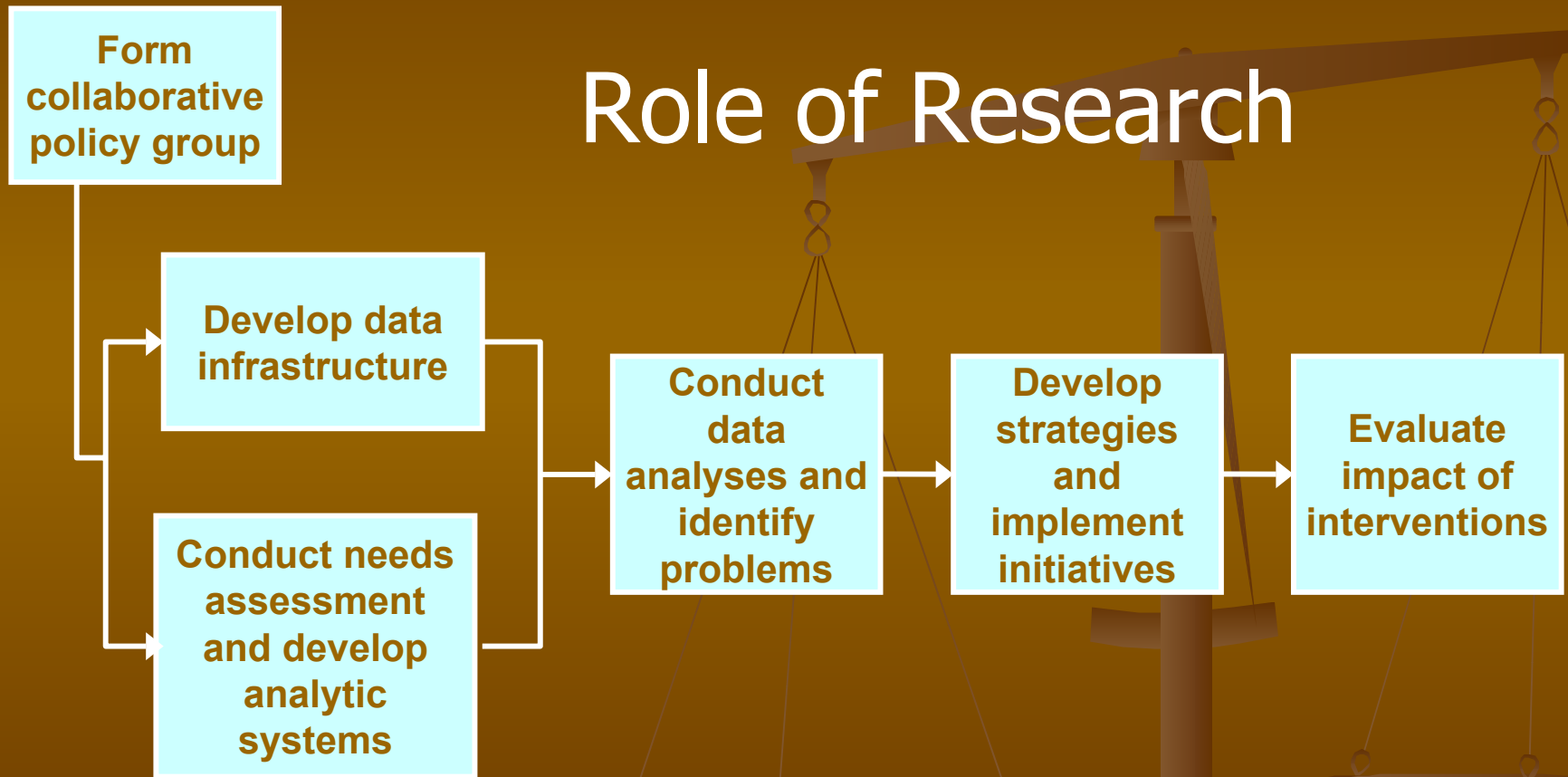
## Variety of organizations

- Criminal justice system agencies
- Local governments
- Healthcare providers
- Public housing officials
- Social service providers
- Educational institutions
- Community-based organizations
- Private companies - technological support

*DATA DRIVEN AND RESEARCH SUPPORTED APPROACH*

# The COMPASS process

## Role of Research



# Data Capacity

- Integrate data sources
  - social, criminal justice, economic, health
- Criminal justice sources
  - incident-based data
  - ADAM and other federal research projects
  - Gun tracing, courts, probation & parole
- Government and community sources
  - Census
  - Schools
  - Public Health and hospitals
- Generate new data through surveys
  - local victimization, fear, risk factors
  - asset mapping



# Research in Policing: Benefits and Challenges

## ■ Benefits

- Outside knowledge and experience
- Work is grounded and evaluated
- Additional resources (students, networks, libraries)

## ■ Challenges

- “Outsiders” (and civilians, no less)
- Poor data, uninterested “partners”
- Speaking a foreign language
- Cops are impatient

# Research in Policing: Do's and Don'ts

## ■ DO's

- Learn about the business
- Ask for input
- Provide some short-term results (to bide time for the longer, research-y results)
- Recognize data (and other) deficiencies and work-around
- Be a resource

## ■ DON'Ts

- Act like you are doing research just for research sake (even if you are!)
- Put airs on
- Neglect the ground level experience that the cops and other stakeholders have
- Demand things
- Create products that the cops won't understand or use

*Research is important  
for effective public  
safety!*

