

Community Prosecution Needs Assessment Survey Summary

John L. Worrall, Ph.D.
Jay Ross, Research Assistant
Melanie Macon, Research Assistant



BACKGROUND

- ✓Why the DA needed information?
- ✓Who did they need information from?
- ✓Expectations?

Aerial View of Proposed North Lake and the Affected Neighborhood



METHODOLOGY

Creation: The survey instrument was borrowed from a survey administered by the city of Sacramento and adjusted to fit local needs.

Administration: The survey was administered by the local Superintendent of Schools Extended/Adult Education.

Needs Assessment Survey

ASIDE

LIMITED DEMOGRAPHIC INFORMATION

SURVEY ITEMS:

- Neighborhood (reside)
- Number and ages of children
- Prior Involvement with Law Enforcement
- Involvement with Neighborhood Watch Programs
- Language of Survey

NOTES:

Spanish responses were coded in English.
Results were limited to respondents who reported living in San Bernardino.

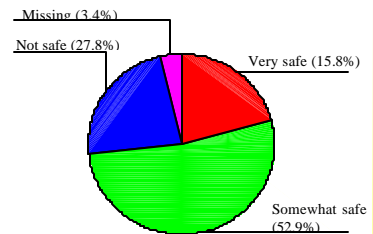
Variables of Greatest Concern to Residents

1. The tables presented summarize the close-ended questions on the survey (questions 2, 3 & 4).
2. A coding scheme was developed for questions 3.1, 3.2 & 3.3
3. Results of the survey were limited to residents of San Bernardino.

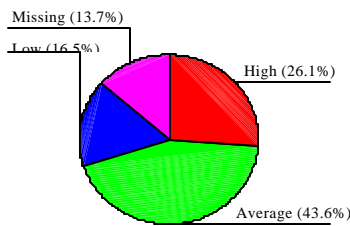
RESULTS

1. Issues of greatest concern were Drugs, Gangs, Theft/Robbery and Violence.
2. Other items that were consistently reported as areas of concern reflect quality of life issues such as Street lighting, Traffic (Dui's & speeding), Loitering, Littering & Abandoned Buildings & Vehicles.
3. The Yellow Apartments.

How safe do you feel in your neighborhood?



Do you feel like you live in a high, average or low crime neighborhood?



What are the three biggest problems in your neighborhood (3.1)?

| | Frequency | Valid Percent |
|--------------------|-----------|---------------|
| drugs | 48 | 22.2 |
| theft/robbery | 28 | 13.0 |
| gangs | 16 | 7.4 |
| graffiti/vandalism | 14 | 6.5 |
| violence | 11 | 5.1 |
| traffic | 12 | 5.6 |
| gun violence | 10 | 4.6 |
| * Total | 216 | 100.0 |
| Missing System | 75 | |
| Total | 291 | |

* Totals are based on complete survey results

What are the three biggest problems in your neighborhood (3.2)?

| | Frequency | Valid Percent |
|-----------------|-----------|---------------|
| drugs | 25 | 14.2 |
| theft/robbery | 19 | 10.8 |
| gangs | 17 | 9.7 |
| prostitution | 15 | 8.5 |
| traffic | 11 | 6.3 |
| loitering | 10 | 5.7 |
| street lighting | 9 | 5.1 |
| * Total | 176 | 100.0 |
| Missing System | 115 | |
| Total | 291 | 100.0 |

* Totals are based on complete survey results

What are the three biggest problems in your neighborhood (3.3)?

| | Frequency | Valid Percent |
|-----------------|-----------|---------------|
| drugs | 13 | 9.5 |
| gangs | 9 | 6.6 |
| prostitution | 9 | 6.6 |
| alcohol use | 8 | 5.8 |
| traffic | 8 | 5.8 |
| violence | 7 | 5.1 |
| street lighting | 6 | 4.4 |
| loitering | 6 | 4.4 |
| * Total | 137 | 100.0 |
| Missing System | 154 | |
| Total | 291 | 100.0 |

* Totals are based on complete survey results

Residents Perception of the Effects of Street Lighting on Rate of Crime

| | | CRIME * STREET LIGHTING | | | Total |
|------------|----------------|-------------------------|-------------------|--------------------|--------|
| | | Street Lighting | | | |
| | | not affected | somewhat affected | seriously affected | |
| CRIME high | Count | 8 | 17 | 47 | 72 |
| | % within CRIME | 11.1% | 23.6% | 65.3% | 100.0% |
| average | Count | 28 | 31 | 57 | 116 |
| | % within CRIME | 24.1% | 26.7% | 49.1% | 100.0% |
| low | Count | 21 | 16 | 10 | 47 |
| | % within CRIME | 44.7% | 34.0% | 21.3% | 100.0% |
| Total | Count | 57 | 64 | 114 | 235 |
| | % within CRIME | 24.3% | 27.2% | 48.5% | 100.0% |

Test of Significance

Chi-Square Tests

| | Value | df | Asymp. Sig. (2-sided) |
|------------------------------|---------------------|----|-----------------------|
| Pearson Chi-Square | 25.740 ^a | 4 | .000 |
| Likelihood Ratio | 26.898 | 4 | .000 |
| Linear-by-Linear Association | 24.703 | 1 | .000 |
| N of Valid Cases | 235 | | |

a. 0 cells (.0%) have expected count less than 5. The minimum expected count is 11.40.

Results Summary

- 16.4 % of respondents feel very safe
- Drugs, loitering, street lighting, & traffic are cited most often as issues that "seriously affect" residents.
- Nearly all residents report having children.
- 74.2% feel neighborhood problems affect their children.
- Nearly 90% of respondents have not worked with local Law Enforcement & 99.3% report no participation in neighborhood watch.
- More than half of respondents are interested in participating in neighborhood watch.

Results Summary, cont.

- Nearly 90 % of respondents have not worked with law enforcement.
- 99.3 % report no participation in neighborhood watch.
- More than half of respondents would be interested in participating in neighborhood watch.

DISCUSSION

Limitations – The survey data is limited to a specific neighborhood and its concerns.

Implications – The information provided by this analysis will assist the District Attorney's office in addressing the specific needs of the target community.

Next step – Recommend quality of life issues be addressed. Take care of the little things.